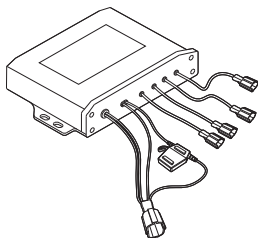


Parking sensor Owner's Manual

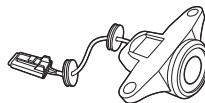


ISUZU

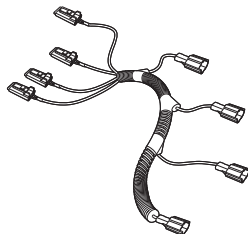
Module x 1



Sensor x 4 / grommet x 8



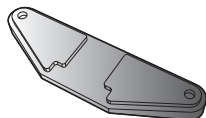
Sensor harness x 1



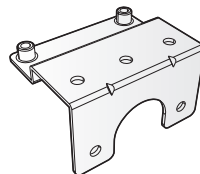
20M harness x 1



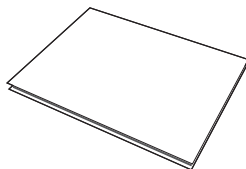
Rubber gasket x 4



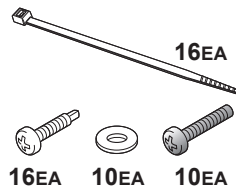
Bracket x 4



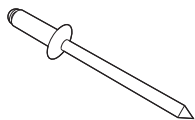
3M Velcro adhesive x 1
(For control box fitting)



Cable Tie & Screw



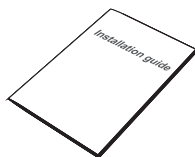
Rivet x 8



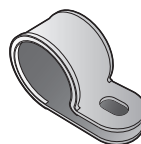
Owner's Manual x 1



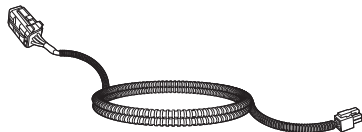
Installation guide x 1



P Clamp x 4



1.6M Radio extension cable x 1



(Optional)

20M harness x 1



The rear sensors will begin operating by placing the vehicle into reverse gear. If the vehicle is fitted with both rear camera and reverse sensors, the reverse sensor indicator is displayed at the bottom of the screen.

A vehicle with reverse sensor only, reverse sensor indicator is displayed at the top of the screen.

- A vehicle with a rear camera and parking sensor installed.



- A vehicle with parking sensor only.



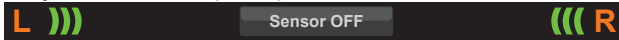
● Measuring the distance of Rear sensor

As the vehicle moves closer to an object the interval between beeps will shorten and each segment will illuminate on the display.

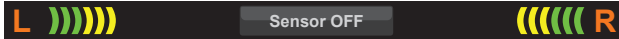
Warning

Depending on the size and shape of the object at the rear of the vehicle, the actual distance the sensors initially detect may be shorter.

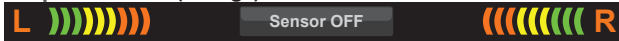
Step 1 Infinite ~ 3m (Green)



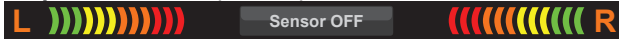
Step 2 3m ~ 2m (Yellow)



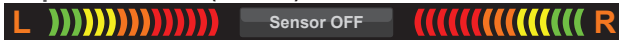
Step 3 2m ~ 1m (Orange)



Step 4 1m ~ 0.45m (Red 1ea)



Step 5 0.45 m ~ 0m (Red 2ea)



If required, the reverse sensor can be turned off by pressing the Sensor OFF button.



● Disclaimer

1. Parking sensors are designed to assist the driver whilst reversing.
It is the driver's responsibility to maintain safe reverse parking practices.
2. The driver should react promptly to alerts from this unit.
3. Isuzu Australia Limited (IAL) does not guarantee or assume liability for damage or loss of sensors.
4. In no event shall IAL or its supplier be liable for any incidental, special, indirect, or consequential damages (including any vehicle repairs or damages allegedly caused by or associated with this product) whether resulting from the use, misuse, or inability to use this product or from defects in the product.

ISUZU

Part Number 92956591